

# 2023 KS2 School Dashboard

for governors & school leaders

Produce custom dashboards  
at [fftaspire.org](https://fftaspire.org)

## St Patrick's CofE School

LA Westmorland and Furness DFE 9433359 Produced October 2023 Version 1

### What it is

Seven easy-to-use reports that help governors and school leaders to evaluate school performance using the latest 2023 school performance indicators.

### What it tells you

What are the strengths, areas for improvement and under-performing groups of pupils

How does attainment and pupil progress compare to the national average this academic year?

How are you performing in different subjects?

How might the context of your school affect performance?

### About the data shown

1 2 3

#### Actual results

Actual results for your school, using a range of measures such as averages and thresholds.



#### Gauges

These display headline indicators and whether actual results and pupils' progress are in line with, or significantly above or below, the national average.

ESTIMATED

1 2 3

#### Pupil progress

The value added progress that your pupils have made from one key stage to the next. FFT compares your actual results to the estimated results based on the progress of similar pupils nationally.



#### Statistical significance

Green plus signs and red minus signs highlight where either actual results or pupils' progress is significantly above or below the national average.



#### Trends

The dashboard analyses school performance over 3-5 years. Any significant year-on-year improvement is highlighted using an up arrow. Significant declines in performance are highlighted with a down arrow.



#### Strengths & weaknesses

These highlight key pupil groups and subjects where progress is above or below the national average.

### Working in partnership with



### Data sources

Generated from FFT Aspire which includes data sourced from the DfE (National Pupil Database) and data calculated by FFT. FFT is accredited as a DfE supplier to receive early access to ASP data. Headline performance indicators will be consistent with the DfE School Performance Tables and ASP.

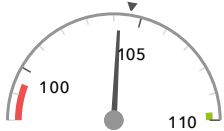
# Overview

## KS2 Attainment 2023 · Actual results

10 pupils

Average Scaled Score (Re, Ma)

104.2

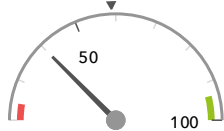


In line with the national average (104.6) ◀

% Expected standard+ (Re, Wr, Ma)

DFE

40%



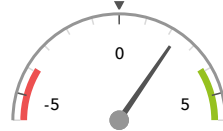
In line with the national average (59%) ◀

## KS2 Progress 2023 · Value Added

10 matched pupils

Average Scaled Score (Re, Ma)

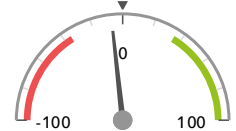
+2.3



In line with the national average (0) ◀

% Expected standard+ (Re, Wr, Ma)

-7%



In line with the national average (0%) ◀

## KS2 higher and lower performing pupil groups 2023

Minimum group size: 5

	Higher performing	Lower performing
<b>Overall achievement</b> pupil progress	Summer Term (5) Middle attainers (5) Not FSM (7)	
<b>KS2 reading achievement</b> pupil progress	Female (6) Summer Term (5) Not FSM (7)	
<b>KS2 writing achievement</b> pupil progress	Summer Term (5) No SEN (8) First language English (10)	
<b>KS2 mathematics achievement</b> pupil progress	Middle attainers (5) Not FSM (7) Not FSM (ever) (7)	No SEN (8)

### Census information

KS2's latest academic year uses the Spring 2023 DfE census – [learn more](#) · [See recent Aspire updates](#)

# Attainment & progress

## KS2 Attainment 2023

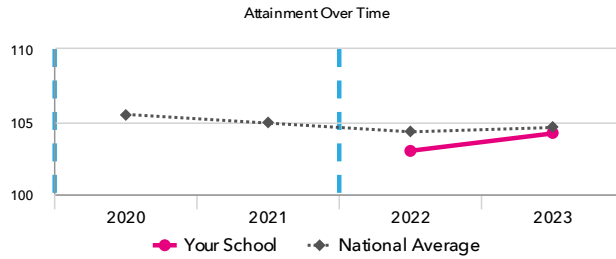
10 pupils

Average Scaled Score (Re, Ma)

104.2



In line with the national average (104.6)



## KS2 Progress 2023

10 matched pupils

Average Scaled Score (Re, Ma)

+2.3



In line with the national average (0)

% Expected standard+ (Re, Wr, Ma)

-7%



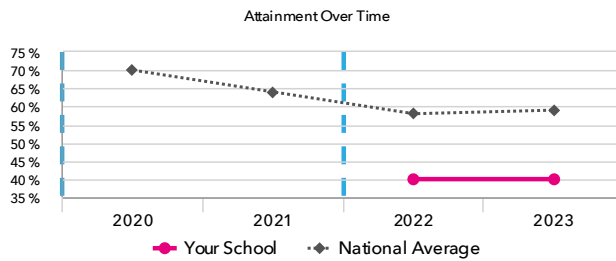
In line with the national average (0%)

% Expected standard+ (Re, Wr, Ma) DFE

40%



In line with the national average (59%)



## KS2 performance summary

	Actual results			Pupil progress		
	2021	2022	2023	2021	2022	2023
Number of Pupils / % Matched	-	10	10	-	100%	100%
% Expected standard+ (Re, Wr, Ma)	-	40%	40%	-	-7%	-7%
% Higher standard (Re, Wr, Ma)	-	0%	10%	-	-6%	+4%
Average Scaled Score (Re, GPS, Ma)	-	102.2	103.4	-	+0.8	+1.7
Average Scaled Score (Re, Ma)	-	103.0	104.2	-	+1.5	+2.3
% Expected standard+ Reading	-	80%	90%	-	+14%	+24%
% Higher standard Reading	-	40%	40%	-	+17%	+17%
Scaled Score Reading	-	105.9	106.3	-	+3.9	+4.0
% Expected standard+ Writing	-	80%	70%	-	+22%	+3%
% Higher standard Writing	-	0%	20%	-	-10%	+9%
Scaled Score Writing	-	100.6	101.4	-	+2.5	+3.0
% Expected standard+ Maths	-	40%	50%	-	-20%	-10%
% Higher standard Maths	-	20%	20%	-	+6%	+2%
Scaled Score Maths	-	100.0	102.0	-	-0.9	+0.6
% Expected standard+ Grammar, Punctuation & Spelling	-	70%	80%	-	+8%	+14%
% Higher standard Grammar, Punctuation & Spelling	-	20%	30%	-	-1%	+6%
Scaled Score Grammar, Punctuation & Spelling	-	102.9	103.2	-	+0.9	+1.3
% Expected standard+ Science	-	60%	80%	-	-	-

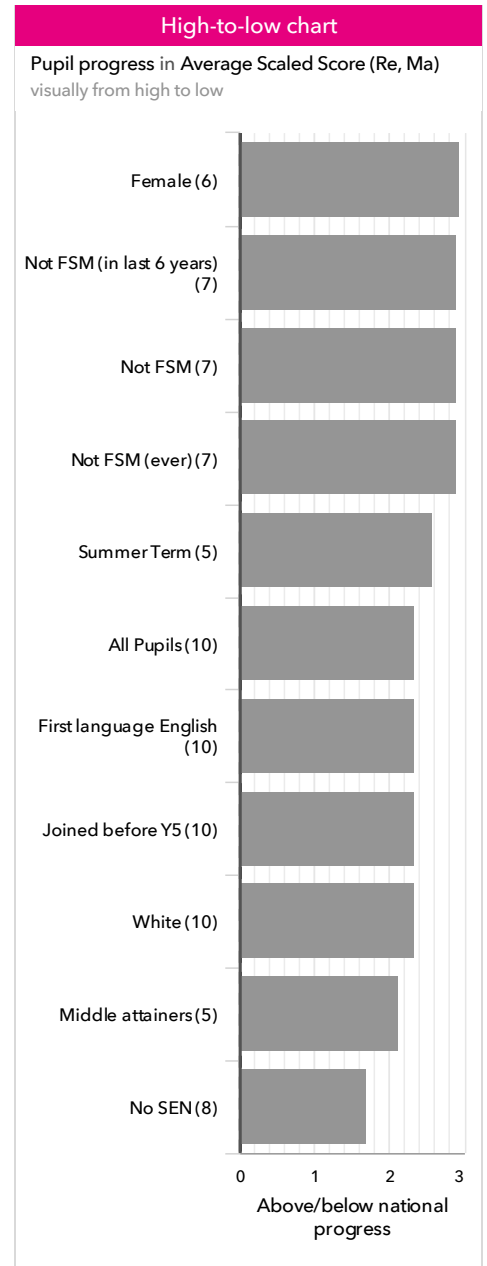
### Census information

KS2's latest academic year uses the Spring 2023 DfE census – [learn more](#) · [See recent Aspire updates](#)

# Pupil groups

## KS2 Pupil groups performance 2023

	Pupils	Actual results			Pupil progress			
		Average Scaled Score (Re, Ma)	% Expected standard+ (Re, Wr, Ma) <small>DFE</small>	% Higher standard (Re, Wr, Ma) <small>DFE</small>	Average Scaled Score (Re, Ma)	% Expected standard+ (Re, Wr, Ma)	% Higher standard (Re, Wr, Ma)	
<b>Summary</b>	All Pupils	10	104.2	40%	10%	+2.3	-7%	+4%
<b>Gender</b>	Male	4	109.3	100%	25%	+1.4	+19%	+11%
	Female	6	100.8	0% <span style="color:red">-</span>	0%	+3.0	-24%	-0%
<b>DFE Prior Attainment</b>	Higher attainers	2	110.3	100%	0%	-0.4	+6%	-27%
	Middle attainers	5	104.7	40%	20% <span style="color:green">+</span>	+2.1	-7%	+19% <span style="color:green">+</span>
	Lower attainers	3	99.2	0%	0%	+4.5	-14%	-0%
<b>Pupil Premium</b>	FSM (in last 6 years)	3	105.3	67%	0%	+1.0	+5%	-5%
	Not FSM (in last 6 years)	7	103.6	29%	14%	+2.9	-12%	+8%
<b>FSM</b>	FSM	3	105.3	67%	0%	+1.0	+5%	-5%
	Not FSM	7	103.6	29%	14%	+2.9	-12%	+8%
<b>FSM Ever</b>	FSM (ever)	3	105.3	67%	0%	+1.0	+5%	-5%
	Not FSM (ever)	7	103.6	29%	14%	+2.9	-12%	+8%
<b>Term of Birth</b>	Autumn Term	3	109.3	67%	33%	+3.1	+1%	+19%
	Spring Term	2	101.5	0%	0%	+0.5	-33%	-0%
	Summer Term	5	102.1	40%	0%	+2.6	-1%	-3%
<b>SEN Group</b>	SEN Support	1	104.0	0%	0%	+3.0	-33%	-0%
	EHC Plan	1	95.0	0%	0%	+6.7	-2%	-0%
	No SEN	8	105.3	50%	13%	+1.7	-4%	+5%
<b>EAL</b>	First language English	10	104.2	40%	10%	+2.3	-7%	+4%
<b>Mobility</b>	Joined before Y5	10	104.2	40%	10%	+2.3	-7%	+4%
<b>Ethnicity</b>	White	10	104.2	40%	10%	+2.3	-7%	+4%



### Census information

KS2's latest academic year uses the Spring 2023 DfE census – [learn more](#) · [See recent Aspire updates](#)

# Subjects

## KS2 subject performance 2023

	Actual results			Pupil progress			Actual results over time		
	2021	2022	2023	2021	2022	2023			
Number of Pupils / % Matched	-	10	10	-	100%	100%			
<b>Reading</b>									
% Expected standard+	-	80%	90%	-	+14%	+24%			
% Higher standard	-	40%	40%	-	+17%	+17%			
Scaled Score	-	106	106	-	+3.9	+4.0			
<b>Writing</b>									
% Expected standard+	-	80%	70%	-	+22%	+3%			
% Higher standard	-	0%	20%	-	-10%	+9%			
Scaled Score	-	101	101	-	+2.5	+3.0			
<b>Maths</b>									
% Expected standard+	-	40%	50%	-	-20%	-10%			
% Higher standard	-	20%	20%	-	+6%	+2%			
Scaled Score	-	100	102	-	-0.9	+0.6			
<b>Grammar, Punctuation &amp; Spelling</b>									
% Expected standard+	-	70%	80%	-	+8%	+14%			
% Higher standard	-	20%	30%	-	-1%	+6%			
Scaled Score	-	103	103	-	+0.9	+1.3			
<b>Science</b>									
% Expected standard+	-	60%	80%	-	-	-			

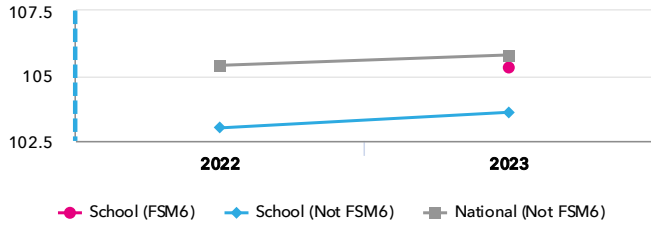
### Census information

KS2's latest academic year uses the Spring 2023 DfE census – [learn more](#) · [See recent Aspire updates](#)

# Disadvantaged pupils

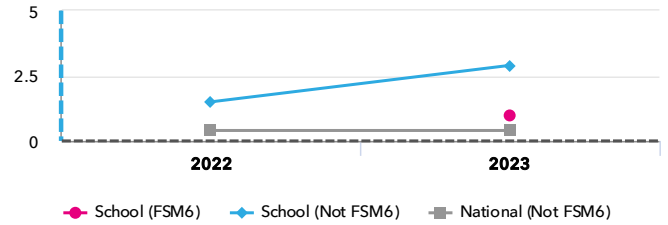
## KS2 attainment for disadvantaged pupils 2023

Average Scaled Score (Re, Ma)

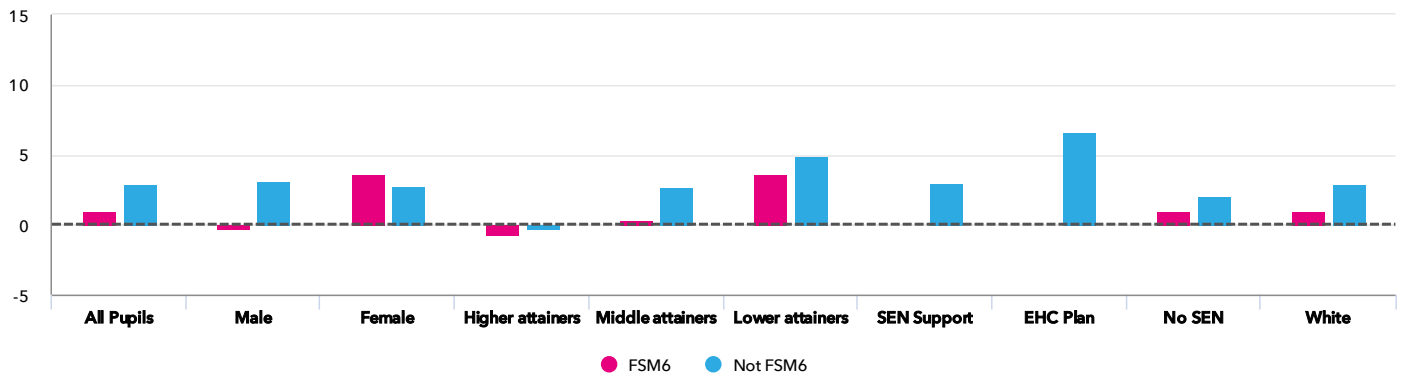


## KS2 progress for disadvantaged pupils 2023

Average Scaled Score (Re, Ma)



## Progress gap Average Scaled Score (Re, Ma)



## Attainment & progress

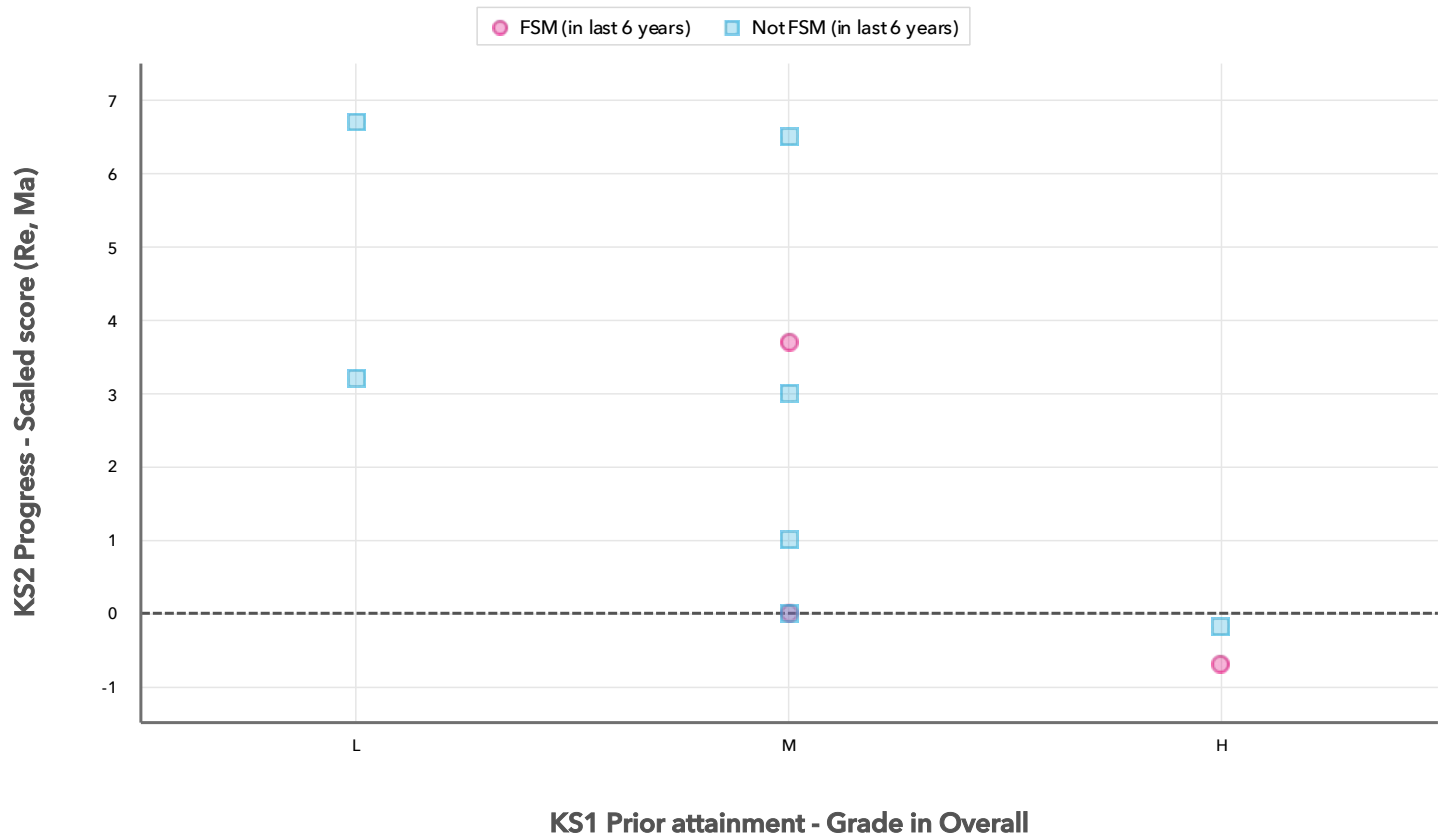
Pupils	Attainment			Progress					
	Average Scaled Score (Re, Ma)			Average Scaled Score (Re, Ma)					
	FSM6	Not FSM6	Gap	FSM6	Not FSM6	Gap			
<b>Summary</b>	All Pupils	3	7	105.3	103.6	1.7	1	2.9	-1.9
<b>Gender</b>	Male	2	2	106.5	112	-5.5	-0.3	3.1	-3.4
	Female	1	5	103	100.3	2.7	3.7	2.8	0.9
<b>DFE Prior Attainment</b>	Higher attainers	1	1	108	112.5	-4.5	-0.7	-0.2	-0.5
	Middle attainers	1	4	105	104.6	0.4	+0.0	2.7	-2.7
	Lower attainers	1	2	103	97.3	5.7	3.7	5	-1.3
<b>SEN Group</b>	SEN Support	-	1	-	104	-	-	3	-
	EHC Plan	-	1	-	95	-	-	6.7	-
	No SEN	3	5	105.3	105.3	0	1	2.1	-1.1
<b>Ethnic Group</b>	White	3	7	105.3	103.6	1.7	1	2.9	-1.9

### Census information

KS2's latest academic year uses the Spring 2023 DfE census – [learn more](#) · [See recent Aspire updates](#)

# Scatterplot

KS2 Pupil scatterplot 2023 10 pupils highlighted by Pupil Premium



### Census information

KS2's latest academic year uses the Spring 2023 DfE census – [learn more](#) · [See recent Aspire updates](#)

## Context

## Context · Year 6

		Pupils		Comparative profile 2022 / 2023		Absence during Key Stage 2		Persistent absence during Key Stage 2	
		School	School	National	School	National	School	National	
<b>Summary</b>	All Pupils	10	100%	100%	-	-	-	-	
<b>Gender</b>	Male	4	40%	51%	-	-	-	-	
	Female	6	60%	49%	-	-	-	-	
<b>DFE Prior Attainment</b>	Higher attainers	2	20%	29%	-	-	-	-	
	Middle attainers	5	50%	45%	-	-	-	-	
	Lower attainers	3	30%	21%	-	-	-	-	
<b>Pupil Premium</b>	FSM (in last 6 years)	3	30%	30%	-	-	-	-	
	Not FSM (in last 6 years)	7	70%	70%	-	-	-	-	
<b>FSM</b>	FSM	3	30%	27%	-	-	-	-	
	Not FSM	7	70%	72%	-	-	-	-	
<b>FSM Ever</b>	FSM (ever)	3	30%	30%	-	-	-	-	
	Not FSM (ever)	7	70%	69%	-	-	-	-	
<b>Term of Birth</b>	Autumn Term	3	30%	34%	-	-	-	-	
	Spring Term	2	20%	33%	-	-	-	-	
	Summer Term	5	50%	34%	-	-	-	-	
<b>SEN Group</b>	SEN Support	1	10%	16%	-	-	-	-	
	EHC Plan	1	10%	5%	-	-	-	-	
	No SEN	8	80%	79%	-	-	-	-	
<b>EAL</b>	First language English	10	100%	77%	-	-	-	-	
<b>Mobility</b>	Joined before Y5	10	100%	92%	-	-	-	-	
<b>Ethnicity</b>	White	10	100%	71%	-	-	-	-	

## Census information

KS2's latest academic year uses the Spring 2023 DfE census – [learn more](#) · [See recent Aspire updates](#)